



CUSTOMER:

Customer Name: ALINVEST

PROJECT:

Project Code: E2558

Project Name: ALFAGEN

DOCUMENT INFORMATION:


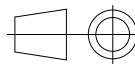
Document Title: Equipment Spider Diagram

Contractor File Name: 2558-3311-TMT-E-DWG-SPD

Contractor Revision Number: A

Customer File Name: -

Customer Revision Number: -

						CONTRACTOR		CONTRACTOR dwg number	Rev. A	Project Code E2558	Project Name ALFAGEN								
								2558-3311-TMT-E-DWG-SPD		Document Title Equipment Spider Diagram			Scale 1:1						
A	29/11/2025	INITIAL VERSION			RORI			RORI		RORI	CLIENT			CLIENT dwg number	Rev. -	DESIGNED: RORI	DRAWN: RORI	APPROVED: RORI	Format A3
Rev.	Date	Revisions description			Designed	Draw	Approved	-	DATE: 29/11/2025	DATE: 29/11/2025		DATE: 29/11/2025		Sheet 1 OF x					
	1		2		3			4		5				6			7	8	9

# POWER AND CONTROL PANEL


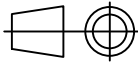
## r41.31-3311-TMT-GEN01-PCP01

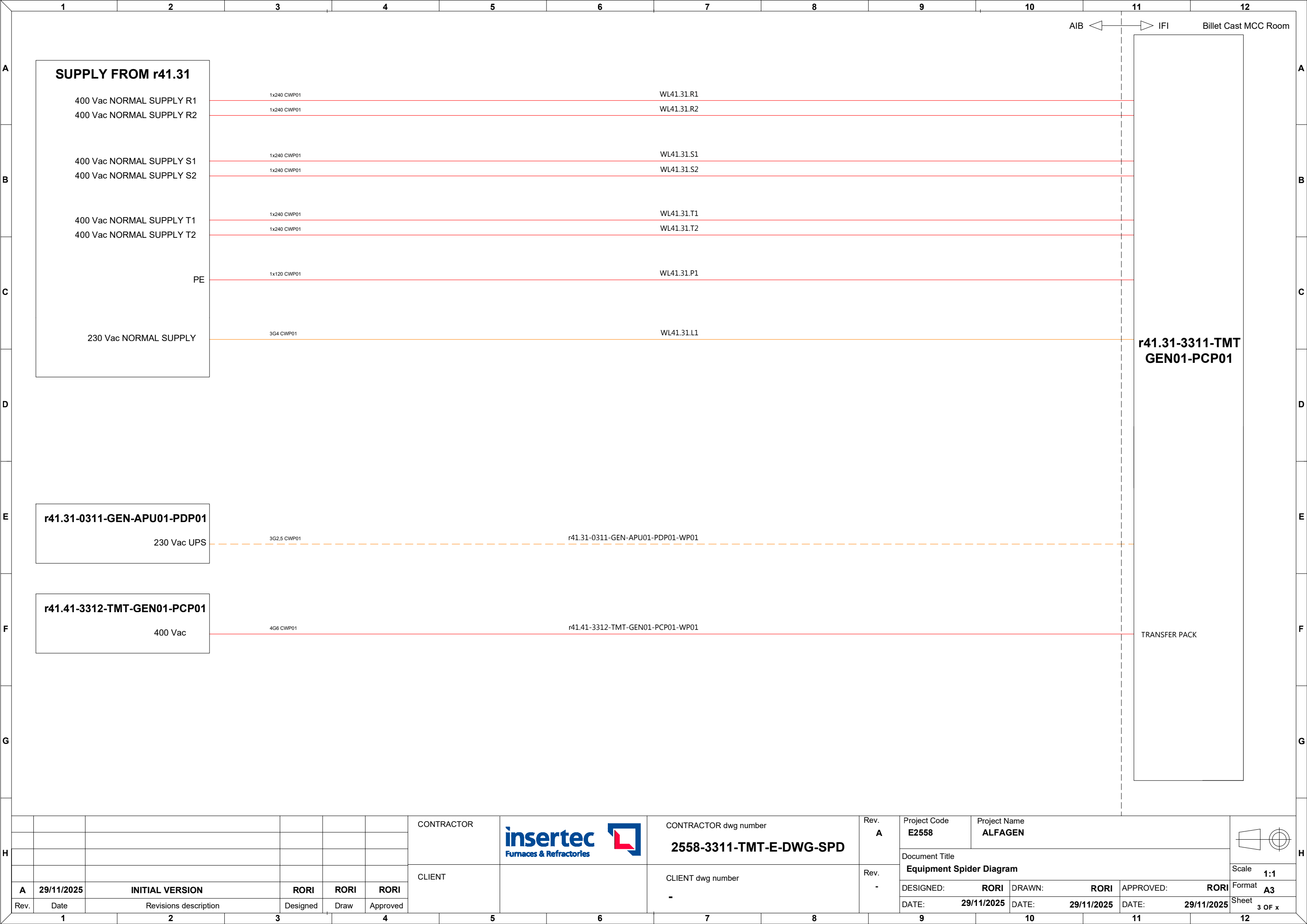
### LEGEND

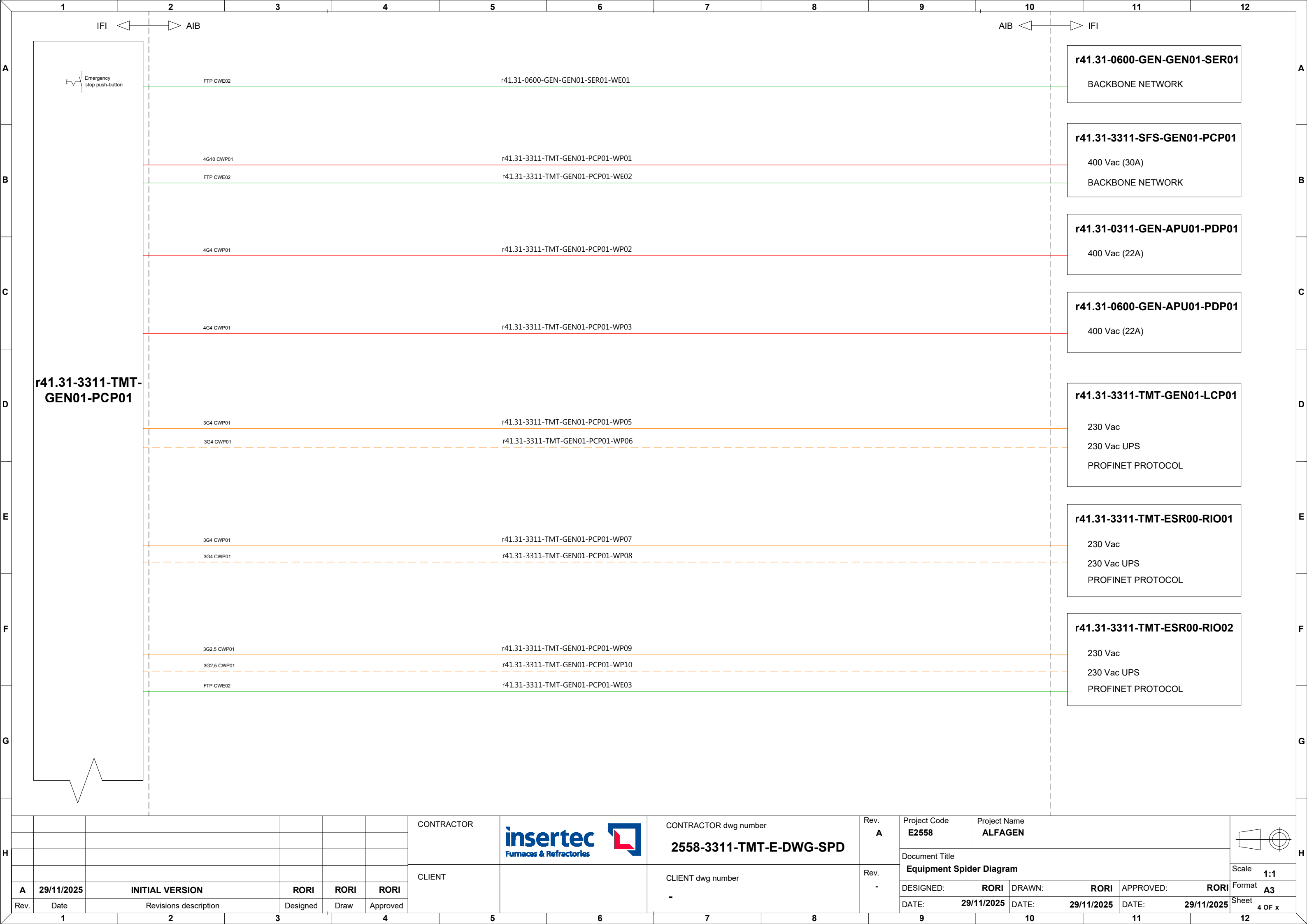
	400Vac Power supply		Regular control signals
	400Vac UPS power supply		Analog & shielded signals
	230Vac Power supply		T/C connection
	230Vac UPS power supply		Communication connection

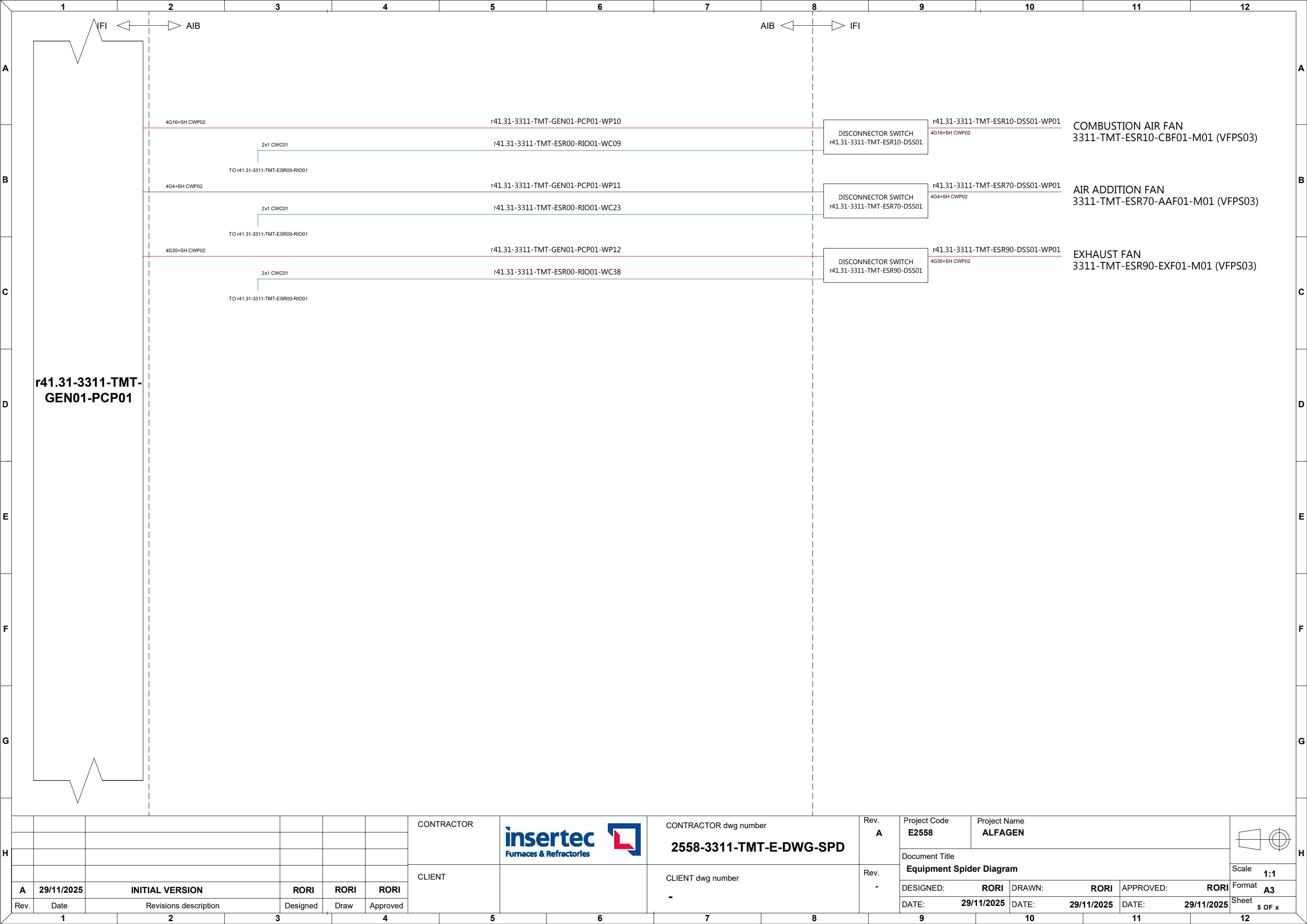
### CATEGORY



Power cables
CWP01: Regular power cables
CWP02: Shielded power cable
CWP03: Flexible power cables
CWP04: Regular high temperature power cables
CWP05: Shielded high temperature power cables
CWP06: General use power cable
Instrumentation and control cables
CWC01: Regular instrumentation control cables
CWC02: Shielded instrumentation control cables
CWC03: Thermocouple cable
CWC04: Flexible instrumentation control cables
CWC05: High voltage cables for ignition transformers
CWC06: Regular high temperature instrumentation control cables
CWC07: Shielded high temperature instrumentation control cables
Communication cables
CWE01: Fieldbus communication cable (Inside cabinets)
CWE02: Fieldbus communication cable (Outside cabinets)
CWE03: Optic fibre communication cable

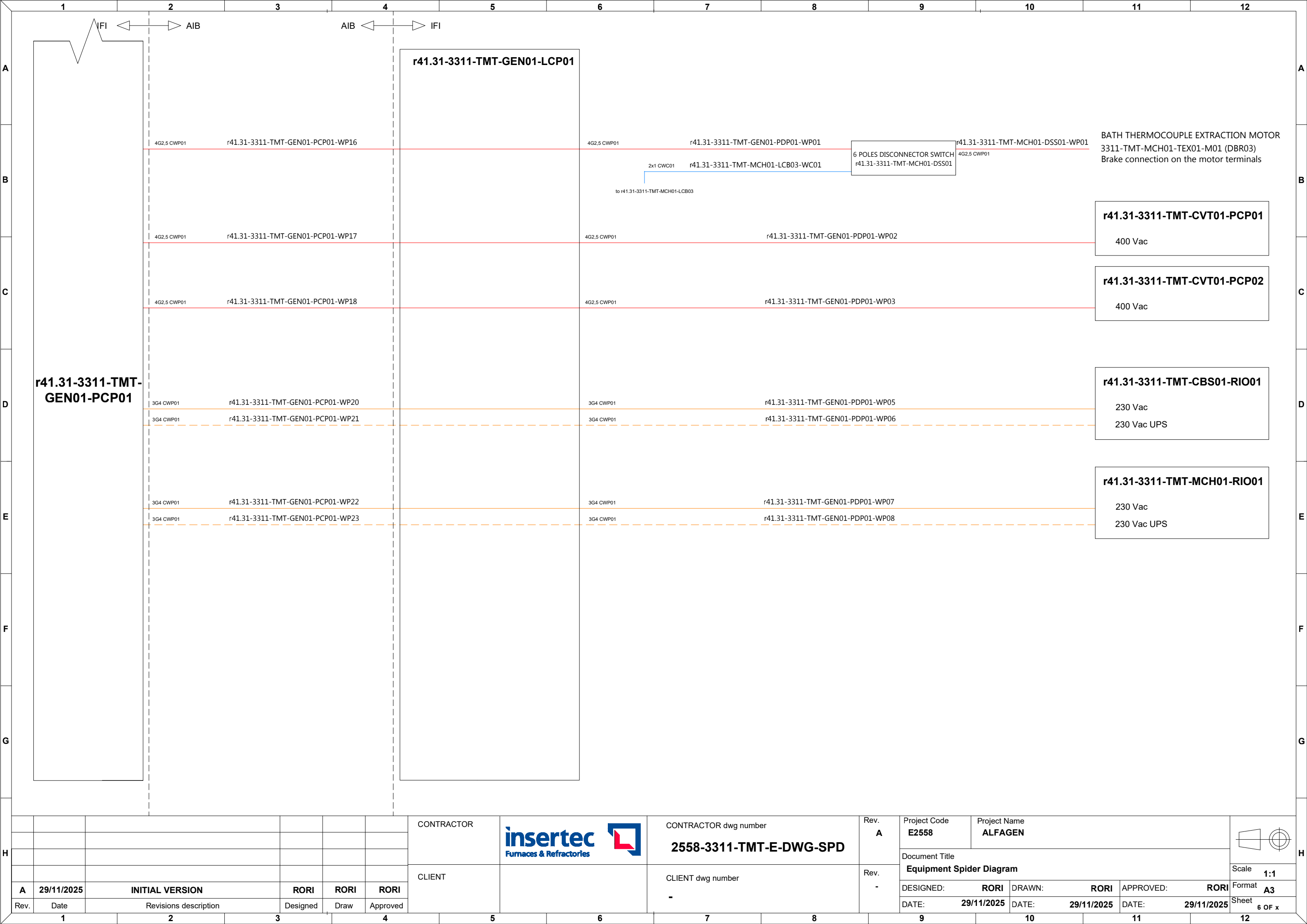
						CONTRACTOR		CONTRACTOR dwg number <b>2558-3311-TMT-E-DWG-SPD</b>	Rev. <b>A</b>	Project Code <b>E2558</b>	Project Name <b>ALFAGEN</b>			
										Document Title <b>Equipment Spider Diagram</b>			Scale <b>1:1</b>	
<b>A</b>	<b>29/11/2025</b>	<b>INITIAL VERSION</b>		<b>RORI</b>	<b>RORI</b>					DESIGNED: <b>RORI</b>	DRAWN: <b>RORI</b>	APPROVED: <b>RORI</b>	Format <b>A3</b>	
Rev.	Date	Revisions description		Designed	Draw	Approved		CLIENT dwg number <b>-</b>	Rev. <b>-</b>	DATE: <b>29/11/2025</b>	DATE: <b>29/11/2025</b>	DATE: <b>29/11/2025</b>	Sheet <b>2 OF x</b>	
1		2	3	4		5				9	10	11	12	









H							CONTRACTOR		CONTRACTOR dwg number	Rev. A	Project Code	Project Name				H
													E2558	ALFAGEN		
							CLIENT		CLIENT dwg number	Rev. -	Document Title			Scale		
											Equipment Spider Diagram			1:1		
	A	29/11/2025	INITIAL VERSION			RORI					RORI	RORI		DESIGNED: RORI	DRAWN: RORI	APPROVED: RORI
Rev.	Date	Revisions description			Designed	Draw	Approved		-					Sheet		
	1	2		3	4		5	6	7	8	9		10		11	12











H							CONTRACTOR		CONTRACTOR dwg number <b>2558-3311-TMT-E-DWG-SPD</b>	Rev. <b>A</b>	Project Code <b>E2558</b>	Project Name <b>ALFAGEN</b>				H							
												Document Title <b>Equipment Spider Diagram</b>					Scale <b>1:1</b>						
							CLIENT		CLIENT dwg number <b>-</b>	Rev. <b>-</b>	DESIGNED: <b>RORI</b>		DRAWN: <b>RORI</b>		APPROVED: <b>RORI</b>		Format <b>A3</b>						
	<b>A</b>	<b>29/11/2025</b>	<b>INITIAL VERSION</b>			<b>RORI</b>					<b>RORI</b>	<b>RORI</b>	DATE: <b>29/11/2025</b>		DATE: <b>29/11/2025</b>		DATE: <b>29/11/2025</b>		Sheet <b>6 OF x</b>				
	Rev.	Date	Revisions description			Designed					Draw	Approved											
<b>1</b>		<b>2</b>		<b>3</b>		<b>4</b>		<b>5</b>		<b>6</b>		<b>7</b>		<b>8</b>		<b>9</b>		<b>10</b>		<b>11</b>		<b>12</b>	

# LOCAL CONTROL PANEL


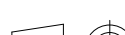
## r41.31-3311-TMT-GEN01-LCP01

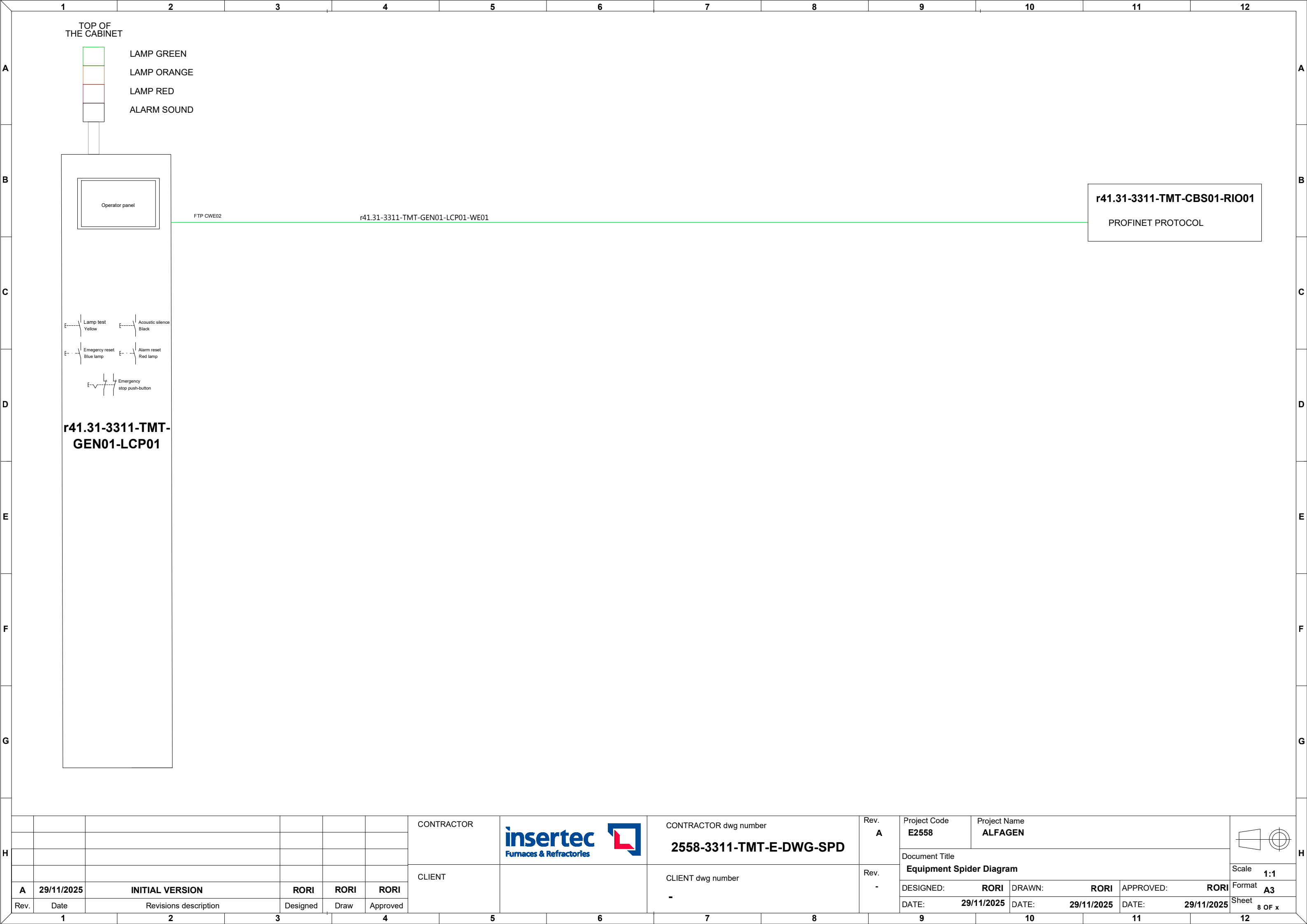
### LEGEND

	400Vac Power supply		Regular control signals
	400Vac UPS power supply		Analog & shielded signals
	230Vac Power supply		T/C connection
	230Vac UPS power supply		Communication connection

### CATEGORY

Power cables
CWP01: Regular power cables
CWP02: Shielded power cable
CWP03: Flexible power cables
CWP04: Regular high temperature power cables
CWP05: Shielded high temperature power cables
CWP06: General use power cable
Instrumentation and control cables
CWC01: Regular instrumentation control cables
CWC02: Shielded instrumentation control cables
CWC03: Thermocouple cable
CWC04: Flexible instrumentation control cables
CWC05: High voltage cables for ignition transformers
CWC06: Regular high temperature instrumentation control cables
CWC07: Shielded high temperature instrumentation control cables
Communication cables
CWE01: Fieldbus communication cable (Inside cabinets)
CWE02: Fieldbus communication cable (Outside cabinets)
CWE03: Optic fibre communication cable

						CONTRACTOR	<div><div>insertec</div><div>Furnaces &amp; Refractories</div><div></div></div>	CONTRACTOR dwg number	Rev. A	Project Code E2558	Project Name ALFAGEN			
								Document Title			Scale 1:1			
								Equipment Spider Diagram						
A	29/11/2025	INITIAL VERSION		RORI	RORI	RORI	CLIENT	CLIENT dwg number -	Rev. -	DESIGNED: RORI		DRAWN: RORI	APPROVED: RORI	Format A3
Rev.	Date	Revisions description		Designed	Draw	Approved				DATE: 29/11/2025	DATE: 29/11/2025	DATE: 29/11/2025	Sheet 7 OF x	













# ENERGY SOURCE REMOTE IO


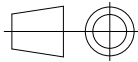
## r41.31-3311-TMT-ESR00-RIO01

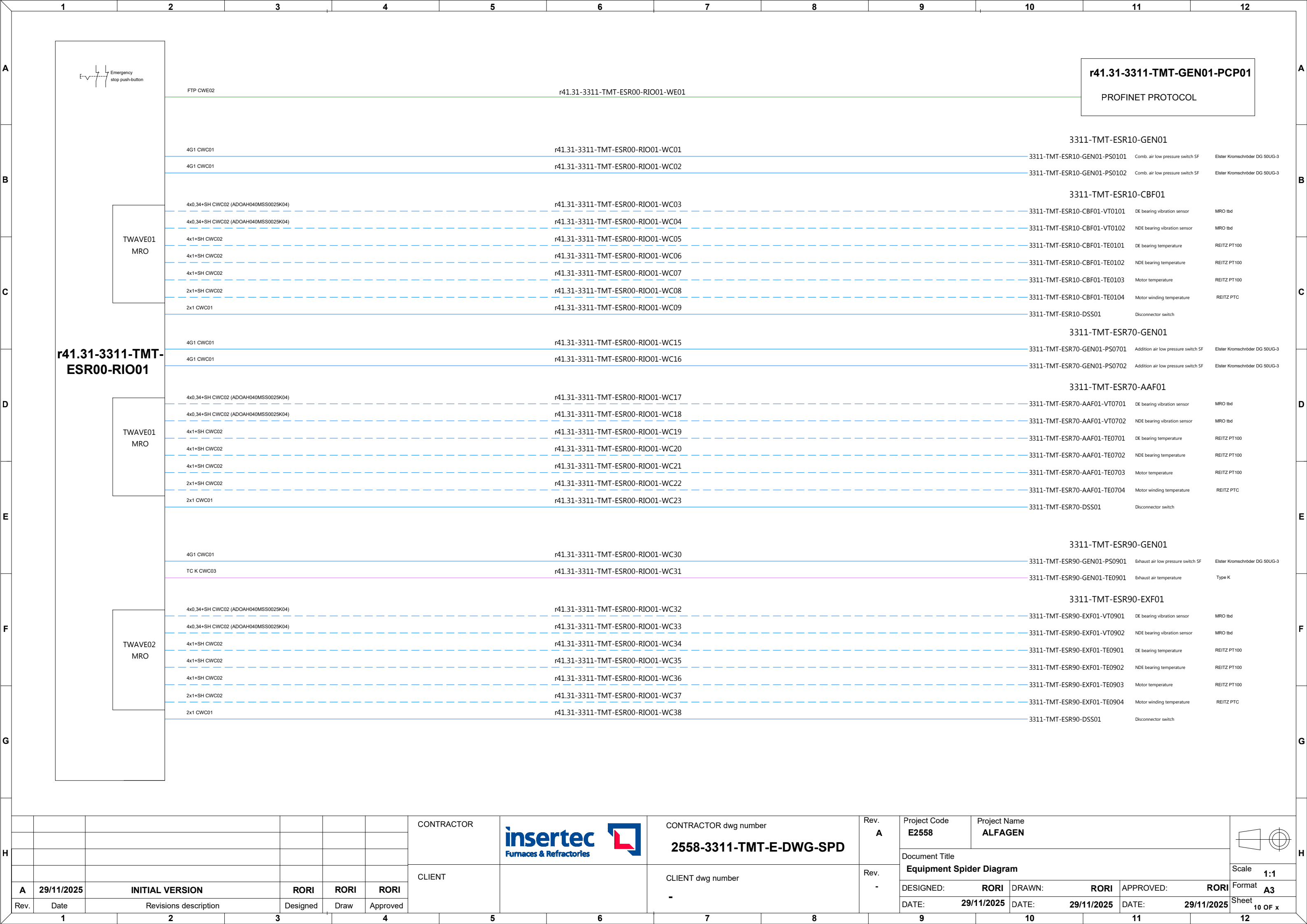
### LEGEND

	400Vac Power supply		Regular control signals
	400Vac UPS power supply		Analog & shielded signals
	230Vac Power supply		T/C connection
	230Vac UPS power supply		Communication connection

### CATEGORY

Power cables
CWP01: Regular power cables
CWP02: Shielded power cable
CWP03: Flexible power cables
CWP04: Regular high temperature power cables
CWP05: Shielded high temperature power cables
CWP06: General use power cable
Instrumentation and control cables
CWC01: Regular instrumentation control cables
CWC02: Shielded instrumentation control cables
CWC03: Thermocouple cable
CWC04: Flexible instrumentation control cables
CWC05: High voltage cables for ignition transformers
CWC06: Regular high temperature instrumentation control cables
CWC07: Shielded high temperature instrumentation control cables
Communication cables
CWE01: Fieldbus communication cable (Inside cabinets)
CWE02: Fieldbus communication cable (Outside cabinets)
CWE03: Optic fibre communication cable









						CONTRACTOR		CONTRACTOR dwg number <b>2558-3311-TMT-E-DWG-SPD</b>	Rev. <b>A</b>	Project Code <b>E2558</b>	Project Name <b>ALFAGEN</b>			
										Document Title <b>Equipment Spider Diagram</b>			Scale <b>1:1</b>	
<b>A</b>	<b>29/11/2025</b>	<b>INITIAL VERSION</b>		<b>RORI</b>	<b>RORI</b>					DESIGNED: <b>RORI</b>	DRAWN: <b>RORI</b>	APPROVED: <b>RORI</b>	Format <b>A3</b>	
Rev.	Date	Revisions description		Designed	Draw	Approved	CLIENT	CLIENT dwg number <b>-</b>	Rev. <b>-</b>	DATE: <b>29/11/2025</b>	DATE: <b>29/11/2025</b>	DATE: <b>29/11/2025</b>	Sheet <b>9 OF x</b>	
<b>1</b>	<b>2</b>	<b>3</b>	<b>4</b>	<b>5</b>	<b>6</b>	<b>7</b>	<b>8</b>	<b>9</b>	<b>10</b>	<b>11</b>	<b>12</b>			



# ENERGY SOURCE REMOTE IO


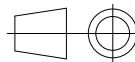
## r41.31-3311-TMT-ESR00-RIO02

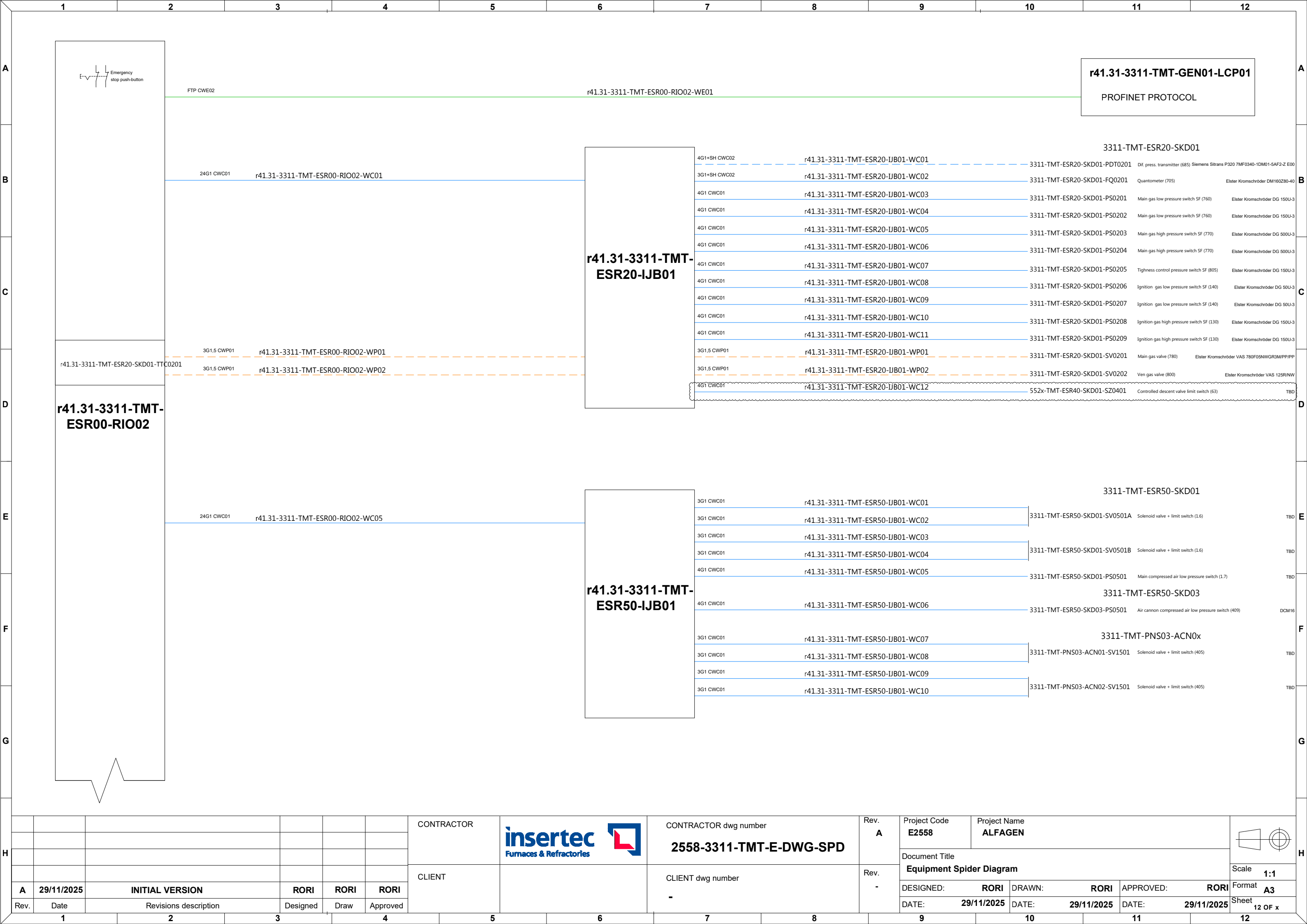
### LEGEND


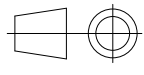
	400Vac Power supply		Regular control signals
	400Vac UPS power supply		Analog & shielded signals
	230Vac Power supply		T/C connection
	230Vac UPS power supply		Communication connection

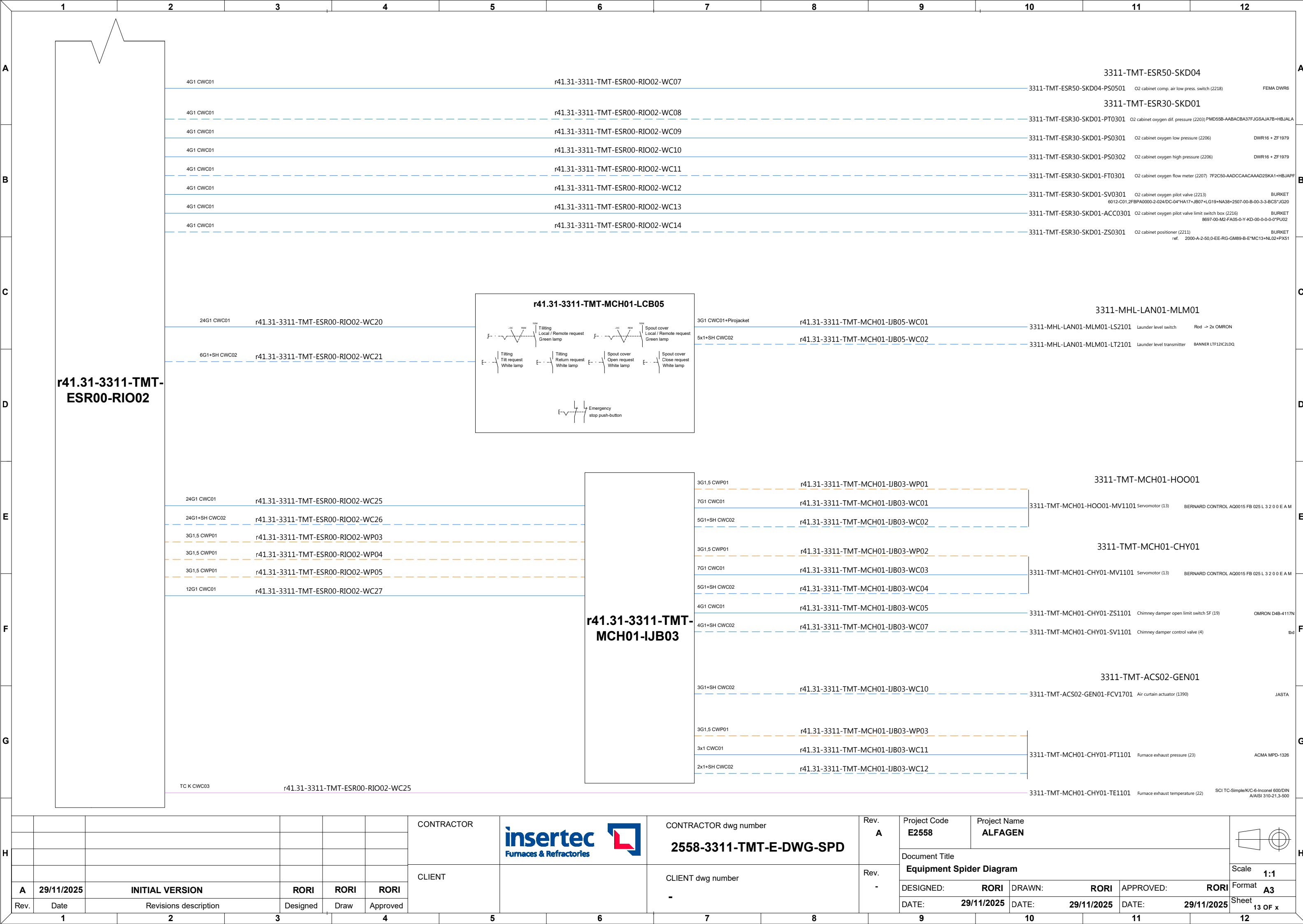
### CATEGORY

Power cables
CWP01: Regular power cables
CWP02: Shielded power cable
CWP03: Flexible power cables
CWP04: Regular high temperature power cables
CWP05: Shielded high temperature power cables
CWP06: General use power cable
Instrumentation and control cables
CWC01: Regular instrumentation control cables
CWC02: Shielded instrumentation control cables
CWC03: Thermocouple cable
CWC04: Flexible instrumentation control cables
CWC05: High voltage cables for ignition transformers
CWC06: Regular high temperature instrumentation control cables
CWC07: Shielded high temperature instrumentation control cables
Communication cables
CWE01: Fieldbus communication cable (Inside cabinets)
CWE02: Fieldbus communication cable (Outside cabinets)
CWE03: Optic fibre communication cable

						CONTRACTOR		CONTRACTOR dwg number	Rev. A	Project Code E2558	Project Name ALFAGEN			
										Document Title				
										Equipment Spider Diagram				
A	29/11/2025	INITIAL VERSION		RORI	RORI	RORI	CLIENT		Rev. -	CLIENT dwg number				Format A3
Rev.	Date	Revisions description		Designed	Draw	Approved				-				Sheet 11 OF x



						CONTRACTOR		CONTRACTOR dwg number	Rev. A	Project Code E2558	Project Name ALFAGEN			
								2558-3311-TMT-E-DWG-SPD		Document Title Equipment Spider Diagram				
					CLIENT			CLIENT dwg number -	Rev. -				Scale 1:1	
A	29/11/2025	INITIAL VERSION		RORI						RORI	RORI	DESIGNED: RORI	DRAWN: RORI	
Rev.	Date	Revisions description		Designed	Draw	Approved				DATE: 29/11/2025	DATE: 29/11/2025	DATE: 29/11/2025	Sheet 12 OF x	



# COMBUSTION SYSTEM REMOTE IO


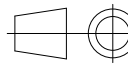
## r41.31-3311-TMT-CBS01-RIO01

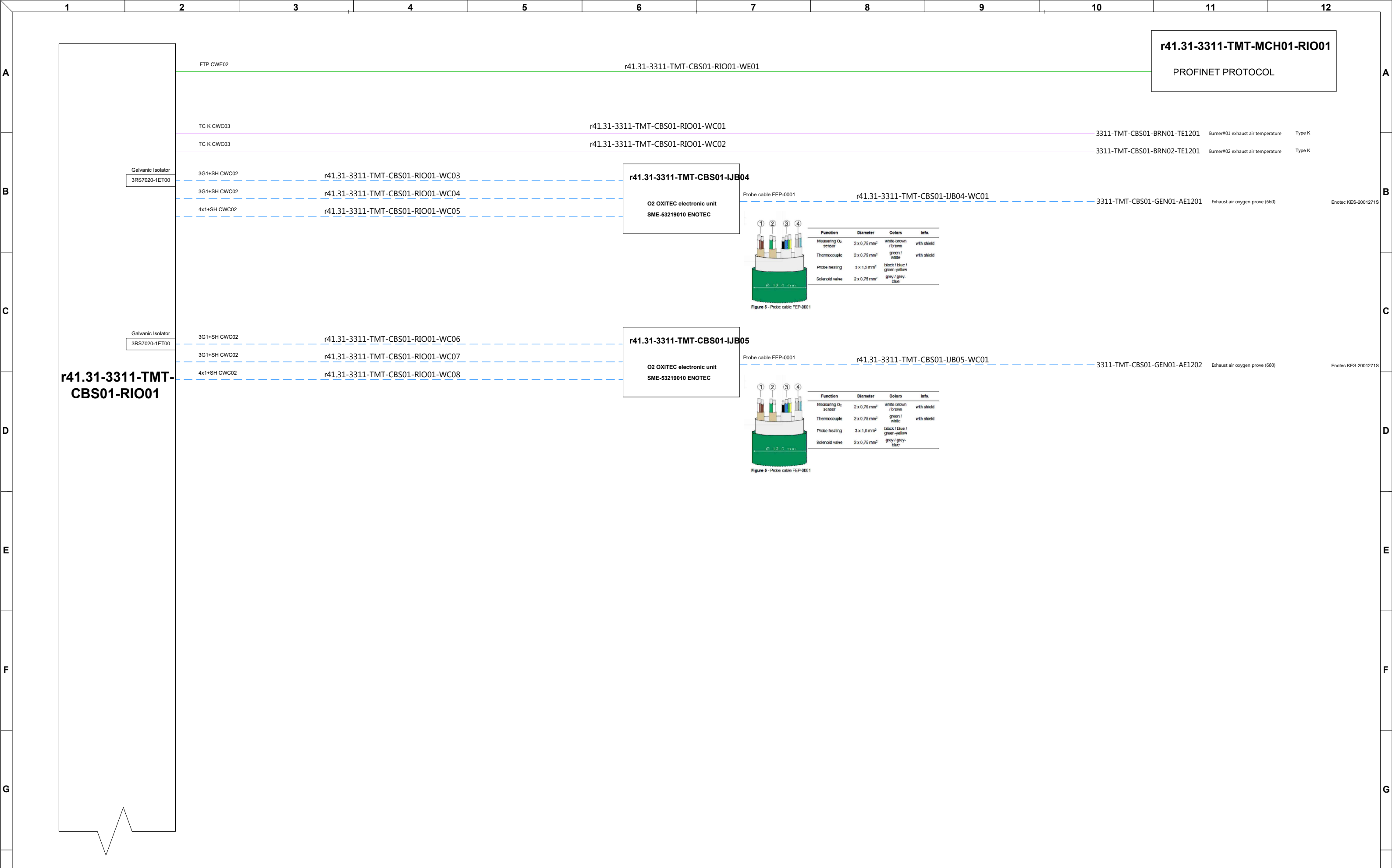
### LEGEND


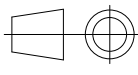
- 400Vac Power supply
- 400Vac UPS power supply
- 230Vac Power supply
- 230Vac UPS power supply
- Regular control signals
- Analog & shielded signals
- T/C connection
- Communication connection

### CATEGORY

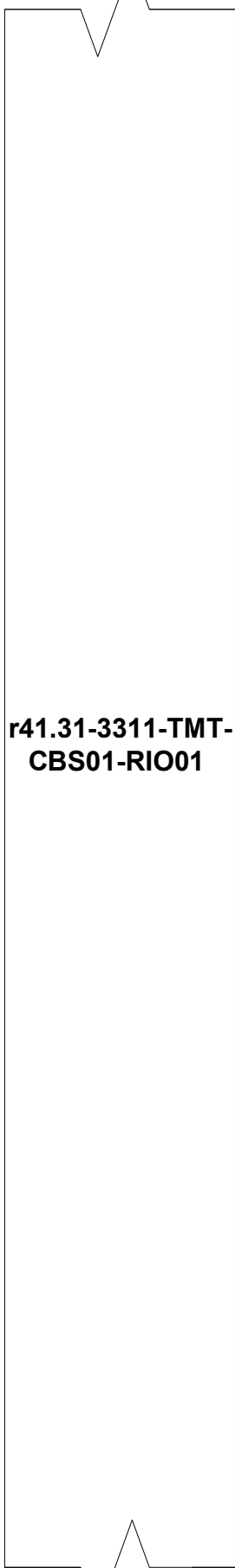
- Power cables
- CWP01: Regular power cables
- CWP02: Shielded power cable
- CWP03: Flexible power cables
- CWP04: Regular high temperature power cables
- CWP05: Shielded high temperature power cables
- CWP06: General use power cable
- Instrumentation and control cables
- CWC01: Regular instrumentation control cables
- CWC02: Shielded instrumentation control cables
- CWC03: Thermocouple cable
- CWC04: Flexible instrumentation control cables
- CWC05: High voltage cables for ignition transformers
- CWC06: Regular high temperature instrumentation control cables
- CWC07: Shielded high temperature instrumentation control cables
- Communication cables
- CWE01: Fieldbus communication cable (Inside cabinets)
- CWE02: Fieldbus communication cable (Outside cabinets)
- CWE03: Optic fibre communication cable



						CONTRACTOR		CONTRACTOR dwg number	2558-3311-TMT-E-DWG-SPD	Rev. A	Project Code	Project Name							
												E2558	ALFAGEN						
												Document Title					Scale 1:1		
						CLIENT		CLIENT dwg number	Rev. -	Equipment Spider Diagram									
A	29/11/2025	INITIAL VERSION			RORI					RORI	RORI	DESIGNED:	RORI	DRAWN:	RORI			APPROVED:	RORI
Rev.	Date	Revisions description			Designed					Draw	Approved	-							Sheet 14 OF x
1		2	3		4	5	6	7	8		9	10	11	12					



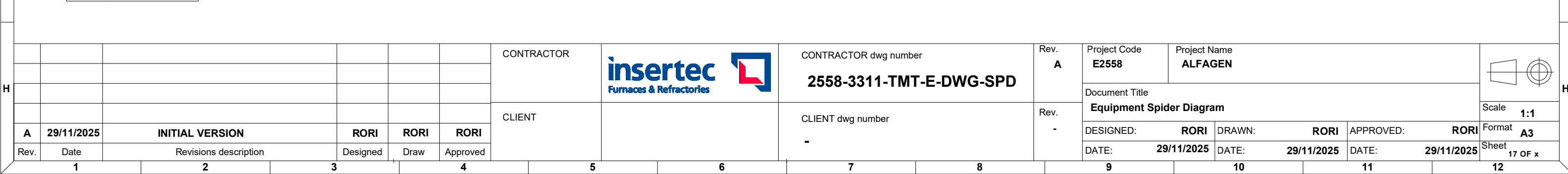
H							CONTRACTOR		CONTRACTOR dwg number	Rev. A	Project Code	Project Name					H							
															E2558			ALFAGEN						
															Document Title									
							CLIENT		CLIENT dwg number	Rev. -	Equipment Spider Diagram				Scale	1:1								
	A	29/11/2025	INITIAL VERSION			RORI					RORI	RORI	DESIGNED:	RORI	DRAWN:	RORI	APPROVED:	RORI	Format	A3				
Rev.	Date	Revisions description			Designed	Draw					Approved							Sheet	15 OF x					
	1		2		3		4		5		6		7		8		9		10		11		12	





H							CONTRACTOR		CONTRACTOR dwg number <b>2558-3311-TMT-E-DWG-SPD</b>	Rev. <b>A</b>	Project Code <b>E2558</b>	Project Name <b>ALFAGEN</b>				H		
											Document Title <b>Equipment Spider Diagram</b>			Scale <b>1:1</b>				
											DESIGNED: <b>RORI</b>	DRAWN: <b>RORI</b>	APPROVED: <b>RORI</b>	Format <b>A3</b>				
	<b>A</b>	<b>29/11/2025</b>	<b>INITIAL VERSION</b>	<b>RORI</b>	<b>RORI</b>	<b>RORI</b>	CLIENT		CLIENT dwg number <b>-</b>	Rev. <b>-</b>	DATE: <b>29/11/2025</b>			DATE: <b>29/11/2025</b>	DATE: <b>29/11/2025</b>		Sheet <b>16 OF x</b>	
	Rev.	Date	Revisions description			Designed					Draw	Approved						
	<b>1</b>	<b>2</b>	<b>3</b>	<b>4</b>	<b>5</b>	<b>6</b>	<b>7</b>	<b>8</b>	<b>9</b>	<b>10</b>	<b>11</b>	<b>12</b>						





# MELTING CHAMBER REMOTE IO


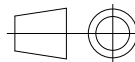
## r41.31-3311-TMT-MCH01-RIO01

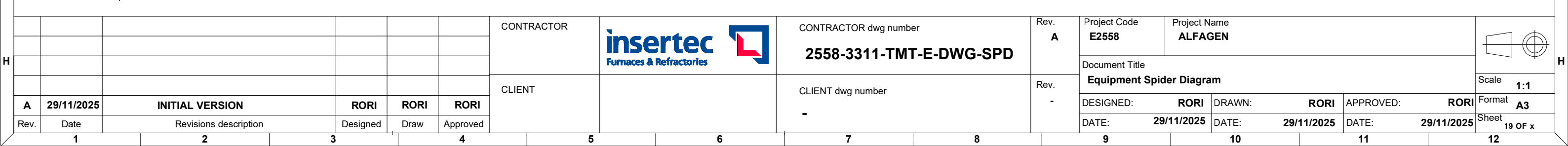
### LEGEND

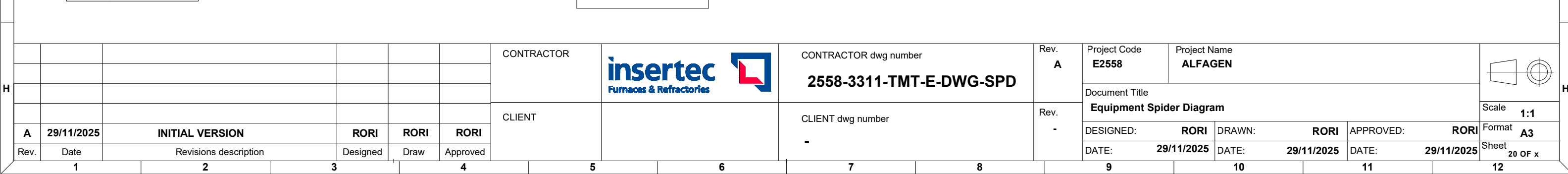
	400Vac Power supply		Regular control signals
	400Vac UPS power supply		Analog & shielded signals
	230Vac Power supply		T/C connection
	230Vac UPS power supply		Communication connection

### CATEGORY

Power cables
CWP01: Regular power cables
CWP02: Shielded power cable
CWP03: Flexible power cables
CWP04: Regular high temperature power cables
CWP05: Shielded high temperature power cables
CWP06: General use power cable
Instrumentation and control cables
CWC01: Regular instrumentation control cables
CWC02: Shielded instrumentation control cables
CWC03: Thermocouple cable
CWC04: Flexible instrumentation control cables
CWC05: High voltage cables for ignition transformers
CWC06: Regular high temperature instrumentation control cables
CWC07: Shielded high temperature instrumentation control cables
Communication cables
CWE01: Fieldbus communication cable (Inside cabinets)
CWE02: Fieldbus communication cable (Outside cabinets)
CWE03: Optic fibre communication cable

						CONTRACTOR		CONTRACTOR dwg number <b>2558-3311-TMT-E-DWG-SPD</b>	Rev. <b>A</b>	Project Code <b>E2558</b>	Project Name <b>ALFAGEN</b>			
										Document Title <b>Equipment Spider Diagram</b>			Scale <b>1:1</b>	
<b>A</b>	<b>29/11/2025</b>	<b>INITIAL VERSION</b>		<b>RORI</b>	<b>RORI</b>					<b>RORI</b>	DESIGNED: <b>RORI</b>	DRAWN: <b>RORI</b>	APPROVED: <b>RORI</b>	
Rev.	Date	Revisions description		Designed	Draw	Approved	CLIENT	CLIENT dwg number <b>-</b>	Rev. <b>-</b>	DATE: <b>29/11/2025</b>	DATE: <b>29/11/2025</b>	DATE: <b>29/11/2025</b>	Sheet <b>18 OF x</b>	
<b>1</b>	<b>2</b>	<b>3</b>	<b>4</b>	<b>5</b>	<b>6</b>	<b>7</b>	<b>8</b>	<b>9</b>	<b>10</b>	<b>11</b>	<b>12</b>			





# CVS POWER AND CONTROL PANEL


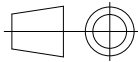
## r41.31-3311-TMT-CVT01-PCP01

### LEGEND

	400Vac Power supply		Regular control signals
	400Vac UPS power supply		Analog & shielded signals
	230Vac Power supply		T/C connection
	230Vac UPS power supply		Communication connection

### CATEGORY

Power cables
CWP01: Regular power cables
CWP02: Shielded power cable
CWP03: Flexible power cables
CWP04: Regular high temperature power cables
CWP05: Shielded high temperature power cables
CWP06: General use power cable
Instrumentation and control cables
CWC01: Regular instrumentation control cables
CWC02: Shielded instrumentation control cables
CWC03: Thermocouple cable
CWC04: Flexible instrumentation control cables
CWC05: High voltage cables for ignition transformers
CWC06: Regular high temperature instrumentation control cables
CWC07: Shielded high temperature instrumentation control cables
Communication cables
CWE01: Fieldbus communication cable (Inside cabinets)
CWE02: Fieldbus communication cable (Outside cabinets)
CWE03: Optic fibre communication cable

						CONTRACTOR		CONTRACTOR dwg number <b>2558-3311-TMT-E-DWG-SPD</b>	Rev. <b>A</b>	Project Code <b>E2558</b>	Project Name <b>ALFAGEN</b>			
										Document Title <b>Equipment Spider Diagram</b>			Scale <b>1:1</b>	
<b>A</b>	<b>29/11/2025</b>	<b>INITIAL VERSION</b>		<b>RORI</b>	<b>RORI</b>					DESIGNED: <b>RORI</b>	DRAWN: <b>RORI</b>	APPROVED: <b>RORI</b>	Format <b>A3</b>	
Rev.	Date	Revisions description		Designed	Draw	Approved	CLIENT	CLIENT dwg number <b>-</b>	Rev. <b>-</b>	DATE: <b>29/11/2025</b>	DATE: <b>29/11/2025</b>	DATE: <b>29/11/2025</b>	Sheet <b>21 OF x</b>	
<b>1</b>	<b>2</b>	<b>3</b>	<b>4</b>	<b>5</b>	<b>6</b>	<b>7</b>	<b>8</b>	<b>9</b>	<b>10</b>	<b>11</b>	<b>12</b>			



# CVS POWER AND CONTROL PANEL


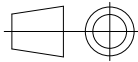
## r41.31-3311-TMT-CVT01-PCP02

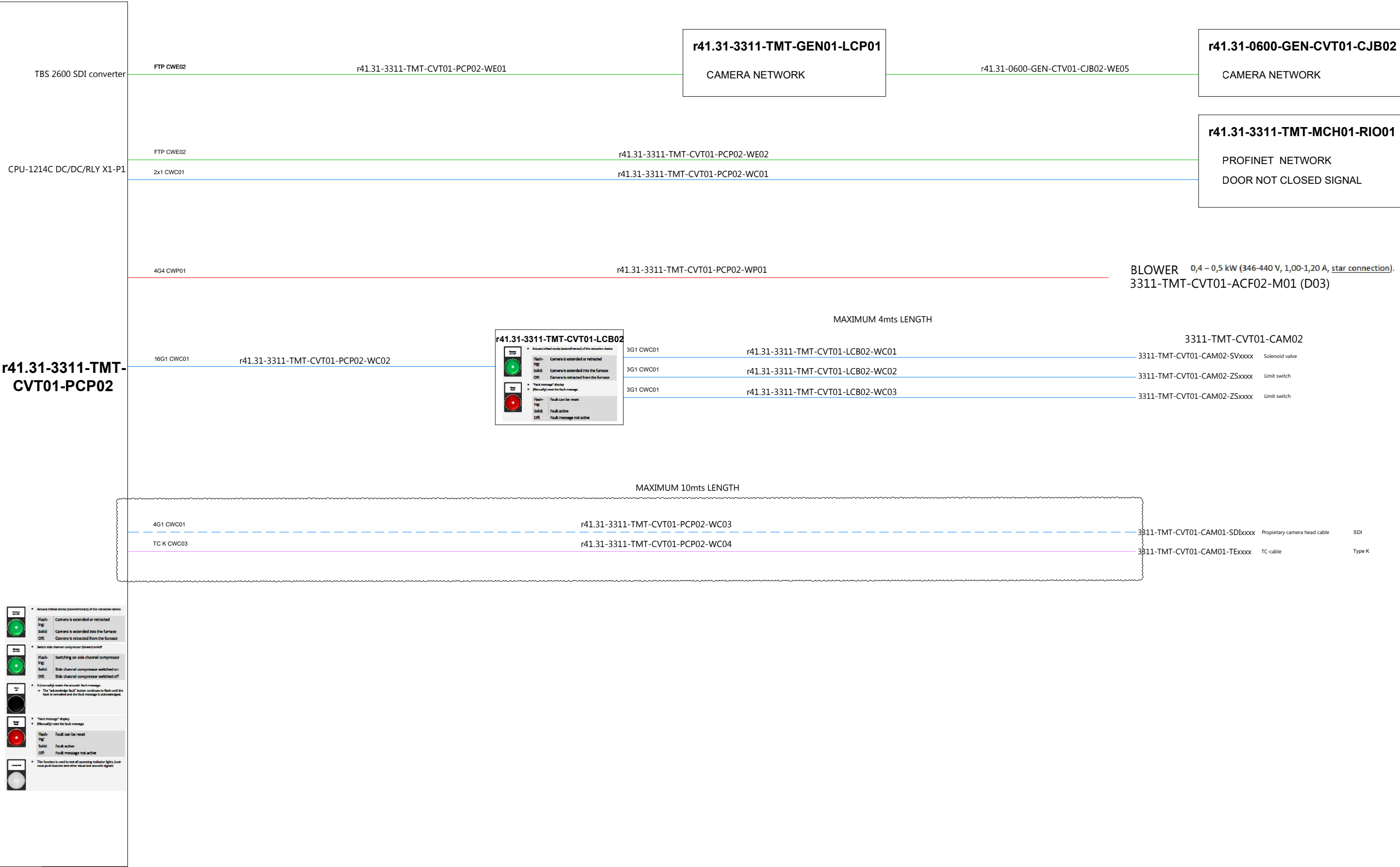
### LEGEND


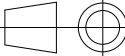
	400Vac Power supply		Regular control signals
	400Vac UPS power supply		Analog & shielded signals
	230Vac Power supply		T/C connection
	230Vac UPS power supply		Communication connection

### CATEGORY

Power cables
CWP01: Regular power cables
CWP02: Shielded power cable
CWP03: Flexible power cables
CWP04: Regular high temperature power cables
CWP05: Shielded high temperature power cables
CWP06: General use power cable
Instrumentation and control cables
CWC01: Regular instrumentation control cables
CWC02: Shielded instrumentation control cables
CWC03: Thermocouple cable
CWC04: Flexible instrumentation control cables
CWC05: High voltage cables for ignition transformers
CWC06: Regular high temperature instrumentation control cables
CWC07: Shielded high temperature instrumentation control cables
Communication cables
CWE01: Fieldbus communication cable (Inside cabinets)
CWE02: Fieldbus communication cable (Outside cabinets)
CWE03: Optic fibre communication cable

						CONTRACTOR		CONTRACTOR dwg number <b>2558-3311-TMT-E-DWG-SPD</b>	Rev. <b>A</b>	Project Code <b>E2558</b>	Project Name <b>ALFAGEN</b>			
										Document Title <b>Equipment Spider Diagram</b>			Scale <b>1:1</b>	
<b>A</b>	<b>29/11/2025</b>	<b>INITIAL VERSION</b>		<b>RORI</b>	<b>RORI</b>					DESIGNED: <b>RORI</b>	DRAWN: <b>RORI</b>	APPROVED: <b>RORI</b>	Format <b>A3</b>	
Rev.	Date	Revisions description		Designed	Draw	Approved		CLIENT dwg number <b>-</b>	Rev. <b>-</b>	DATE: <b>29/11/2025</b>	DATE: <b>29/11/2025</b>	DATE: <b>29/11/2025</b>	Sheet <b>23 OF x</b>	
1	2	3	4	5	6	7	8	9	10	11	12			



						CONTRACTOR		CONTRACTOR dwg number	Rev. A	Project Code E2558	Project Name ALFAGEN					
								2558-3311-TMT-E-DWG-SPD		Document Title						
										Equipment Spider Diagram						
A	29/11/2025	INITIAL VERSION			RORI	RORI	RORI	CLIENT	CLIENT dwg number -	Rev. -	DESIGNED: RORI		DRAWN: RORI	APPROVED: RORI	Format A3	
Rev.	Date	Revisions description			Designed	Draw	Approved				DATE: 29/11/2025		DATE: 29/11/2025	DATE: 29/11/2025	Sheet 24 OF x	